

PART OF THE SW. 1/4, OF SECTION 27, T.7N., R.1W., S.L.B. & M.
PARAMOUNT ESTATES 1ST AMENDMENT

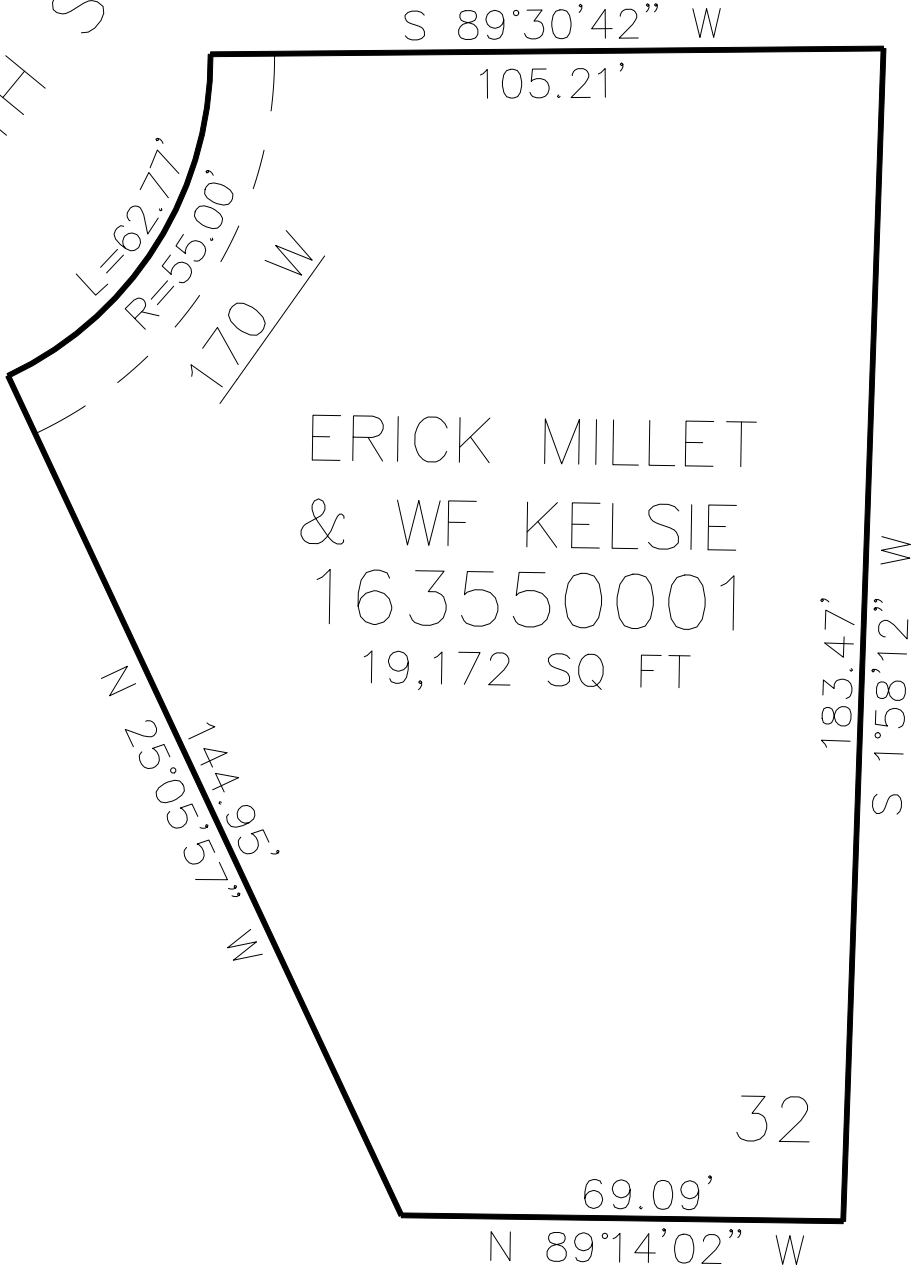
355

TAXING UNIT: 433

IN NORTH OGDEN CITY
SCALE 1" = 30'

SEE PAGE 337

2800 NORTH STREET



SEE PAGE 337

SEE PAGE 337

10' UTILITY & DRAINAGE EASEMENTS EACH
SIDE OF PROPERTY LINES AS INDICATED
BY DASHED LINES EXCEPT AS OTHERWISE
SHOWN.

FOR COMPLETE ENG DATA SEE
ORIGINAL DEDICATION PLAT IN
BOOK 83, PAGE 71 OF RECORDS.